

CEDAR RAPIDS, IOWA



J.E. ADAMS INDUSTRIES  
OWNERS MANUAL

MODEL 29025-29028

- PAGE 2-----SPECIFICATIONS
- PAGES 2 & 3----INSTALLATION
- PAGES 3 – 5----PROGRAMMING
- PAGE 6-----OPERATING
- PAGE 6-----MAINTENANCE
- PAGES 6 & 7--- TROUBLESHOOTING
- PAGES 8 – 10---PARTS LIST
- PAGE 11 – 14---WIRE DIAGRAMS

## SPECIFICATIONS:

### Unit specifications:

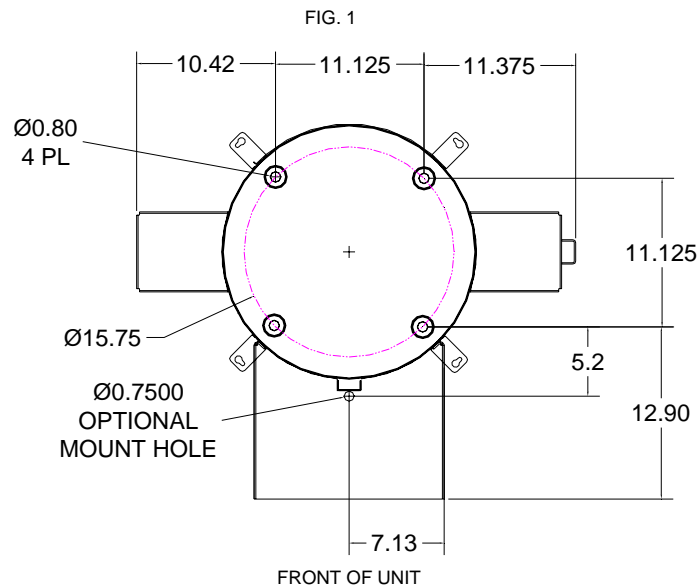
Voltage: 110v, 60Hz  
Amperage: (1)30 amp service is required for this unit  
Weight: 260 lbs with pallet attached

### Vac specifications:

Motors: (3) Ametek 110v motors  
Fuses: (3) 10 amp inline fuses  
Relays: (2) contactors SPDT 30 amp rating per contact

## Installation Instructions:

- Determine location to mount unit
- Run 30 amp service to that location (*NOTE UNIT HAS WIRE PROVIDED UNDERNEATH TO CONNECT INCOMING POWER SUPPLY*)
- Mount unit to location and use fig. 1 for mount pattern
- If unit is vault ready configuration see fig. 1 for mounting and fig. 2 for vault tube location.





- 4) Press **CH +** button. Timer will display coin value. This should \$.25 and should not be changed.
- 5) Press the **CH +** button. Display will now read (**A: 30**) or may be a different time. (**A**) Will be the time per coin for the **VAC**. Set desired time per coin by using the **VOL -** to decrease or the **VOL +** to increase. Once time is entered move to next step.
- 6) Press the **CH +** button. Display will now read (**B: 30**) or may be different time. (**B**) Will be the time per coin for **TURBO**. Set desired time per coin by using the **VOL -** to decrease or the **VOL +** to increase. Once time is entered move to next step.
- 7) Press the **CH +** button. Display will now read **C**. **C** is not use.
- 8) Press the **CH +** button. Display will now read **D**. **D** is not use.
- 9) Press the **CH +** button. Display will now read **E**. **E** is not use.
- 10) Press the **CH +** button. Display will now read **F**. **F** is not use.
- 11) Press the **CH +** button. Display will now read (on A). This is the number of coins to start **VAC**. Use the **VOL -** and **VOL +** to adjust. Once this is done press the **CH+** button and repeat for (B) **TURBO**.
- 12) Press the **CH +** button. Display will read bonus time. Set if desired. See explanation at the end programming instructions.
- 13) Press the **CH +** button. Display will read debit mode. Set if desired. See explanation at the end programming instructions.
- 14) Press the **CH +** button. Display will read delayed start. Set if desired. See explanation at the end programming instructions.
- 15) Press the **CH +** button. Display will read **HLxx**. Set if desired. See explanation at the end programming instructions.
- 16) Press the **CH +** button. Display will read Restart off or restart on depending on what is set. Restart off will require a person to put in full amount after unit is turned off to reactivate. Restart on allows for additional coins to be put in the machine to keep unit running. To set use **VOL -** or **VOL +** to change.
- 17) Press the **CH +** button. Display will now read **STD** or **USER** or **MIX**. To make a custom message use **VOL +** button to scroll to **USER**. At this point press and hold **CH +** button until original message appears. At this time you may change the message simply by using the **VOL -** or **VOL +** buttons to change letters. **Once message has been entered you must put the symbol / at the end of message**. This will tell display that this is the end of the message.
- 18) Press the **CH +** button now 5 more times to exit programming.
- 19) Unit should now be programmed.

Program definitions:

- Bonus time settings:
  - Amount of time set in bonus time is added to regular time per coin/pulse(e.g. if you want to give 45 seconds for

bonus time and your regular time per coin is 30 seconds, you would set bonus time at 00:15)

- Bonus is disabled by setting bonus time to 00:00.
  - If bonus time is set to less than one minute, bonus time is added when bonus coin is reached and every coin after that until time expires.
  - If bonus time is set at 1:00 or more, bonus will be a “one time” bonus. Bonus time will only be added for bonus coin or multiples of bonus coin (e.g. 16<sup>th</sup> coin, 32<sup>nd</sup> coin, etc). Any other coin will on receive regular time per coin.
  - If bonus time is set to 99:00, when bonus coin is deposited, timer will show “-on-“ and timer will continue to run until coin switch wire is shorted to ground by a loop detector or other switch closure for a minimum of two seconds.
- Debit and credit mode:
    - Debit mode: As coins are deposited display shows “\$1.75 MORE, \$1.50 MORE, \$1.25 MORE” etc. until start price is reaches. Once start price is reached display switches to time accumulating until no more coins have been deposited.
    - Credit mode: As coins are deposited display shows money accumulating (\$.25, \$.50, \$.75 etc). If timer is also set to delayed start mode timer will continue to show money accumulating until no more coins have been deposited. If timer is set to instant start, as soon as start price is reached, timer will change to time counting down.
    - Both mode: As coins are deposited display shows money accumulating (\$.25, \$.50, \$.75 etc). If start price is not reached, after 5 seconds timer will alternate between “add \$x.xx more” and amount of money already deposited.

#### Display programming with push button:

- Unit can be programmed using buttons that are located inside display. One is labeled **S2**, which is used to change from item to item. One is labeled **S1** which is used to set desired value. If you hold down **S1** this will cause numbers to decrease. If you repeatedly push **S1** numbers will increase.
- When programming with buttons use same instructions as remote except for the following. Where it says to press **CH +** use **S2** and where it says to use **VOL +** or **-** use **S1**.

## Operating Instructions:

- Select desired function.
- Insert coins or bills to start desired function.
- If other function is selected other than original selected item unit will recalculate timer based on the amount of money it takes to start the specific function.
- Once service is used, hang up hose.

## Maintenance:

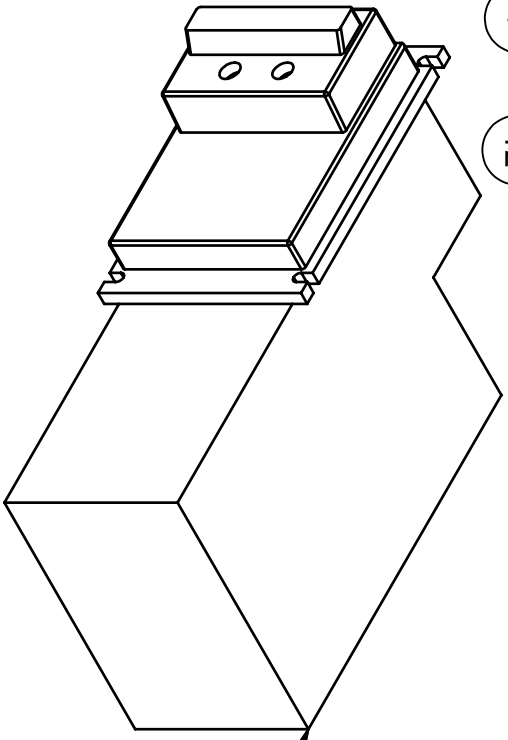
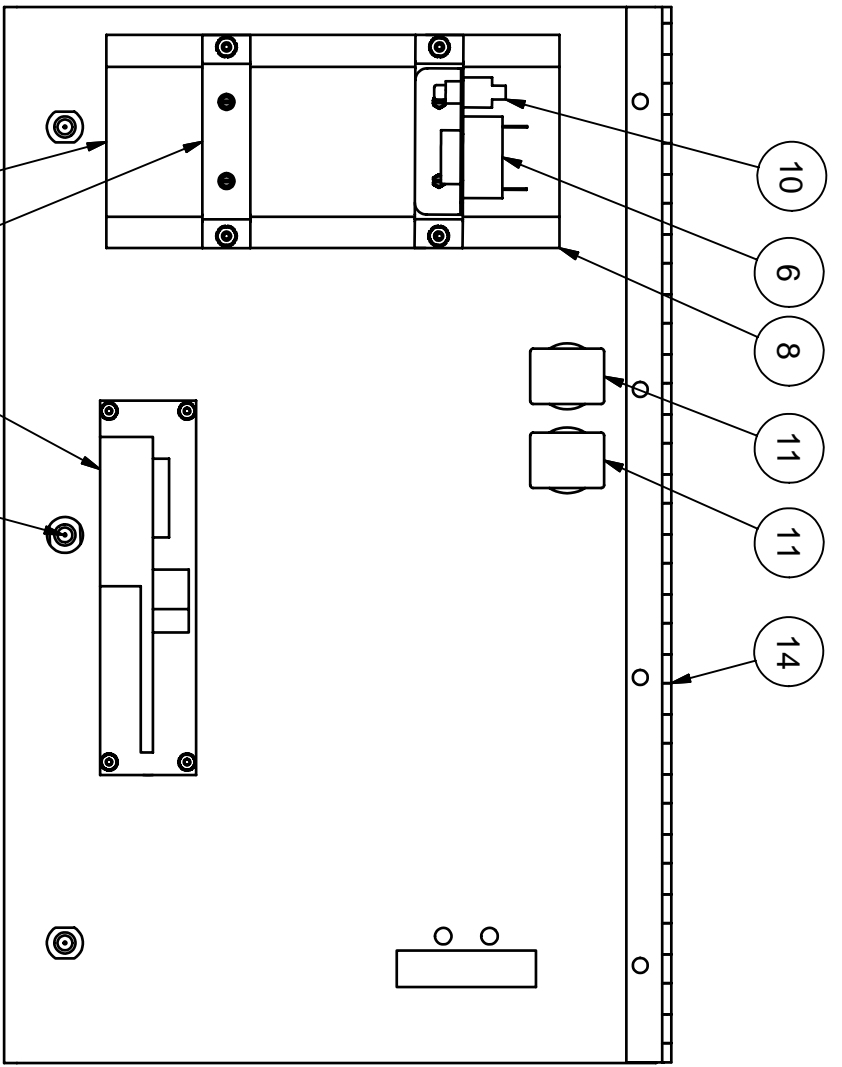
- Filter bags should be taken out weekly and shaken out. Also it might be a good idea to keep a new set of bags on hand so that once a month or longer you can take original bags out and wash them.
- Check vac hose for cracks on a weekly basis.
- Check shampoo and spot formula bottles to assure that they are full.
- Clean canister with a stainless steel cleaner as needed.
- Check motor brushes approx. every 3 months for excessive wear. Motor brushes should be changed if they are shorter than ¼". ***Please disconnect power before doing this.***

## Troubleshooting:

### ***DISCONNECT POWER BEFORE SERVICING***

<b>Problem</b>	<b>Possible cause</b>	<b>Solution</b>
Unit is not powered	Breaker inside unit is not in the on position	Flip breaker on
Display is not powering	Breaker inside unit is not in the on position  Check transformer inside main power box in unit. Is there 24VAC at output terminal?	Flip breaker on  Replace transformer (8131-2)

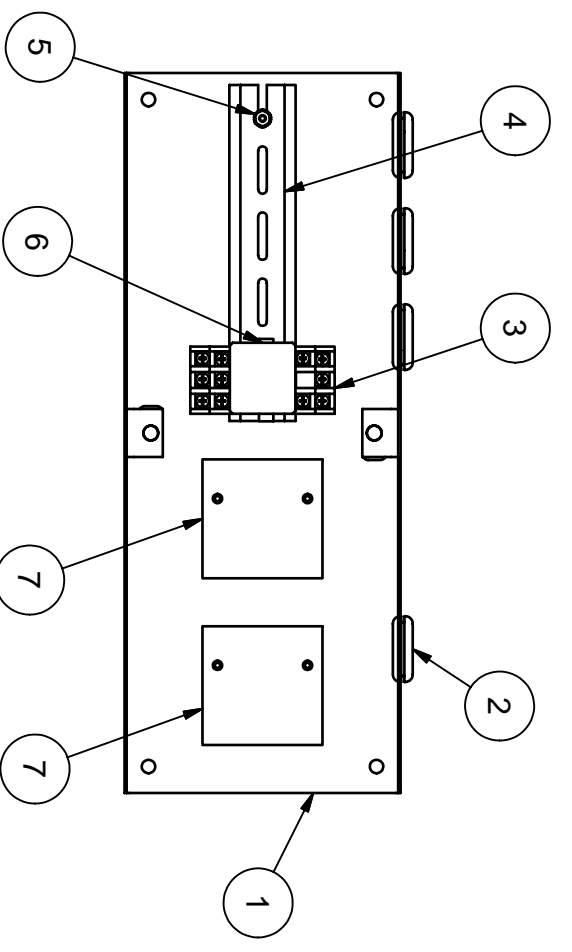
Display reads "fail"	Coin acceptor putting out continuous pulse  Program in display may be lost	Press mode button on display. If fail does not go away replace coin acceptor. (8149-92) Reprogram display. If fail goes away and then comes back, replace battery in display.
Unit keeps blowing my breaker from my incoming power source	Inadequate wire size supplied to machine  Wrong size breaker	Call electrician and install proper wire size for 30amp service versus length or run.  Install correct breaker( only use wire size that is adequate to handle 30 amp breaker)
Fuses for vac motors keep blowing.	Inadequate wire size supplied to machine  Motor brushes may be bad or too short	Call electrician and install proper wire size for 30amp service versus length or run.  Replace motor brushes (8055BR)
Vac motors will not shut off after display has timed out	Check contactors for vac and turbo located in relay control box	If contact is stuck open replace with new contactor. (5967D001)
Unit has lost suction	Vac hose clogged  Filter bags need cleaned  Vac hose is damaged  Cleanout door gaskets torn or worn	Clean out debris from vac hose  Clean out filter bags or replace (8076)  Replace vac hose (2036)  Replace gaskets (8159)



8130-6 MARS BILL ACCEPTOR

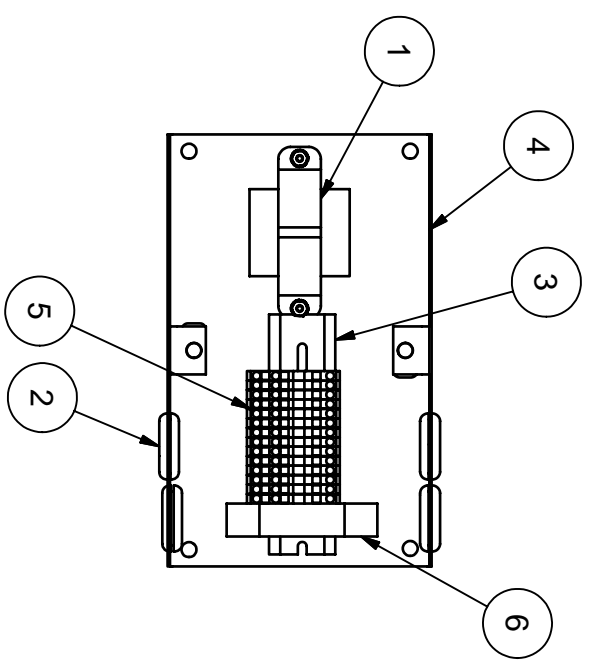
BILL OF MATERIALS			
ITEM	PART NUM	DESCRIPTION	QTY
1	8149-92	IMONEX - US QTR. AND DOLLAR AND TOKEN	1
2	8157	NUT, #6-32 KEPP NUT STAINLESS	4
3	29000-24	DISPLAY BRACKET	2
4	5629D2	#8 x 1/2 SELF TAPPING SCREW	4
5	5611D2	NUT, 10-24 UNC KEPP-ZINC	4
6	8000-11	ALARM, LAST COIN ALERT	1
7	29000-25	HORN BRACKET	1
8	29000-34	LEXAN WINDOW	1
9	8000-15	BIG DIXMOR DISPLAY	1
10	8726	PUSH BUTTON	1
11	20000-72A	SWITCH, ILLUMINATED PUSHBUTTON	2
12	8958-1	MEDECO SCREW LOCK	3
13	8659-24	LOCK COLLAR -SS	3
14	29025-7W	CONTROL DOOR WELDMENT	1

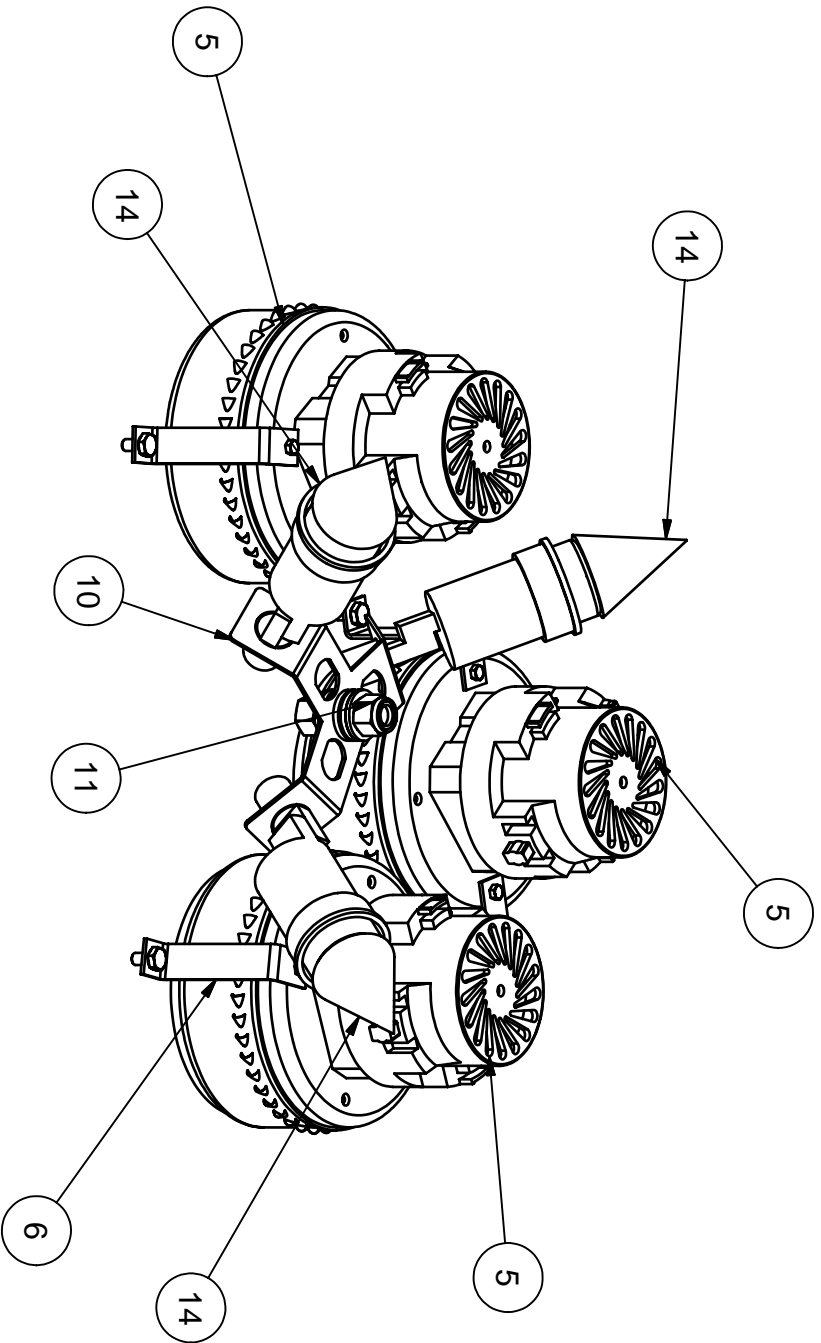




BILL OF MATERIALS			
ITEM	PART NUM	DESCRIPTION	QTY
1	29000-19W	RELAY CONTROL PLATE WELDMENT	1
2	5639D6	RUBBER GROMMET	4
3	8768B	RELAY DIN MOUNT BLOCK	1
4	28000-95	DIN RAIL 7IN	1
5	8157	NUT, #6-32 KEPP NUT STAINLESS	2
6	8768	RELAY 24VAC	1
7	5967D001	CONTACTOR RELAY	2

BILL OF MATERIALS			
ITEM	PART NUMB	DESCRIPTION	QTY
1	8131-2	TRANSFORMER, 110/220-24 1.66A	1
2	5639D6	RUBBER GROMMET	4
3	29000-79	DIN RAIL CUT TO 5IN	1
4	29000-17W	MAIN CONTROL WELDMENT	1
5	28000-80	3 CONDUCTOR TERMINAL BLOCK	14
6	28000-128	MAGNETIC CIRCUIT BREAKER	1
7	8157	NUT, #6-32 KEPP NUT STAINLESS	4





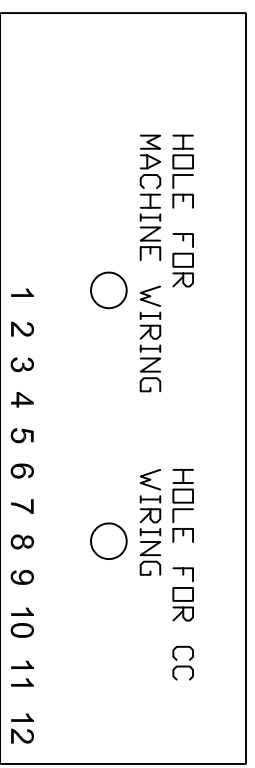
BILL OF MATERIALS

ITEM	PART NUMBER	DESCRIPTION	QTY
4	8057	MOTOR GASKET	2
5	8055	MOTOR, AMETEK 115V	3
6	28000-36	MOTOR MOUNT	6
10	29000-30A	LIGHT BRACKET ASSEMBLY	1
11	5603D11	1/2 Std NC Nylock Nut	2
12	5606D10	WASHER, FLAT 1/2 SAE	2
13	5639D4	RUBBER GROMMET	2
14	8925	FLOURESCENT BULB	3

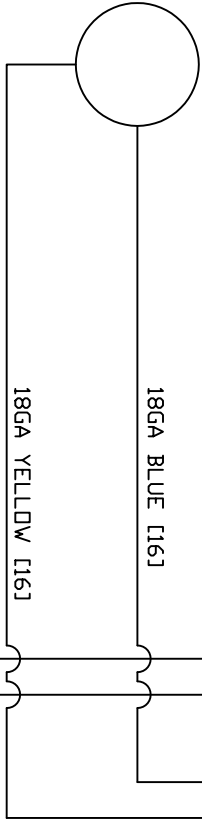
DOOR  
S29025-2 OF 5

- (F) FEMALE CONNECTOR
- (M) MALE CONNECTOR

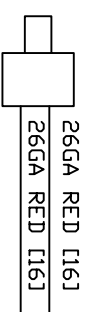
DISPLAY



HORN



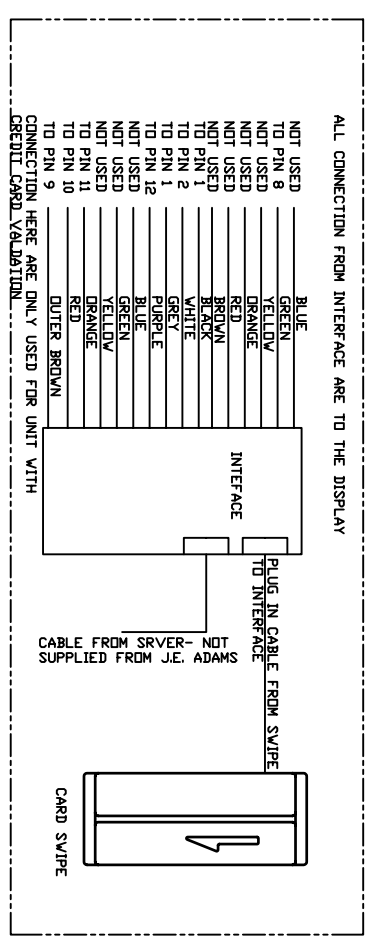
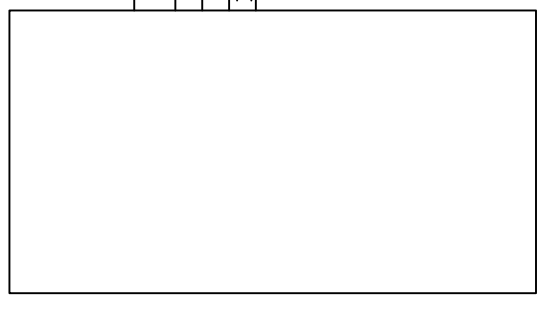
PUSH BUTTON



COIN MECH

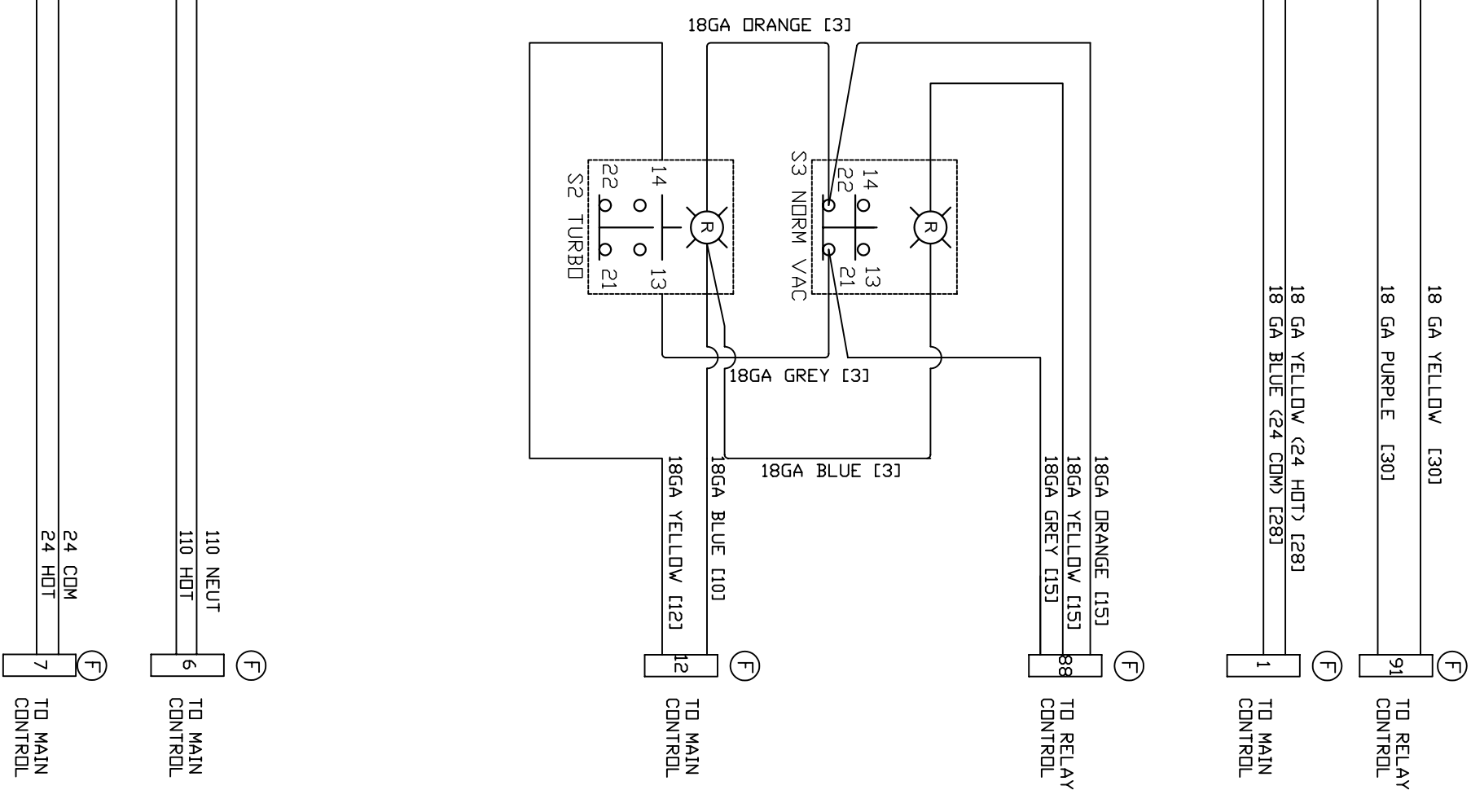


BILL ACCEPTOR



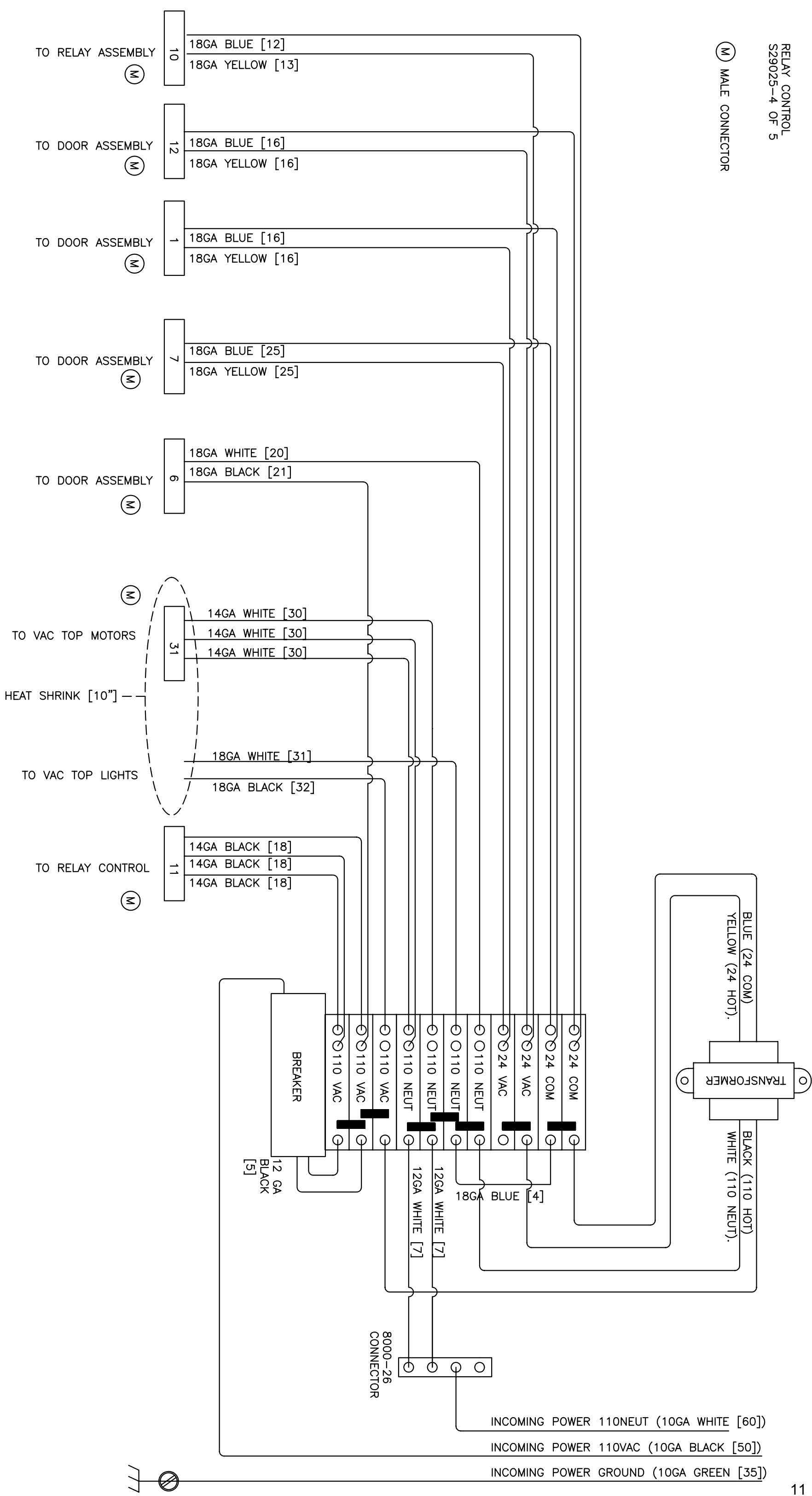
ATTACH GROUND FROM VAL TO FACEPLATE HANDLE SCREW

LOCATED IN VALIDATOR BOX



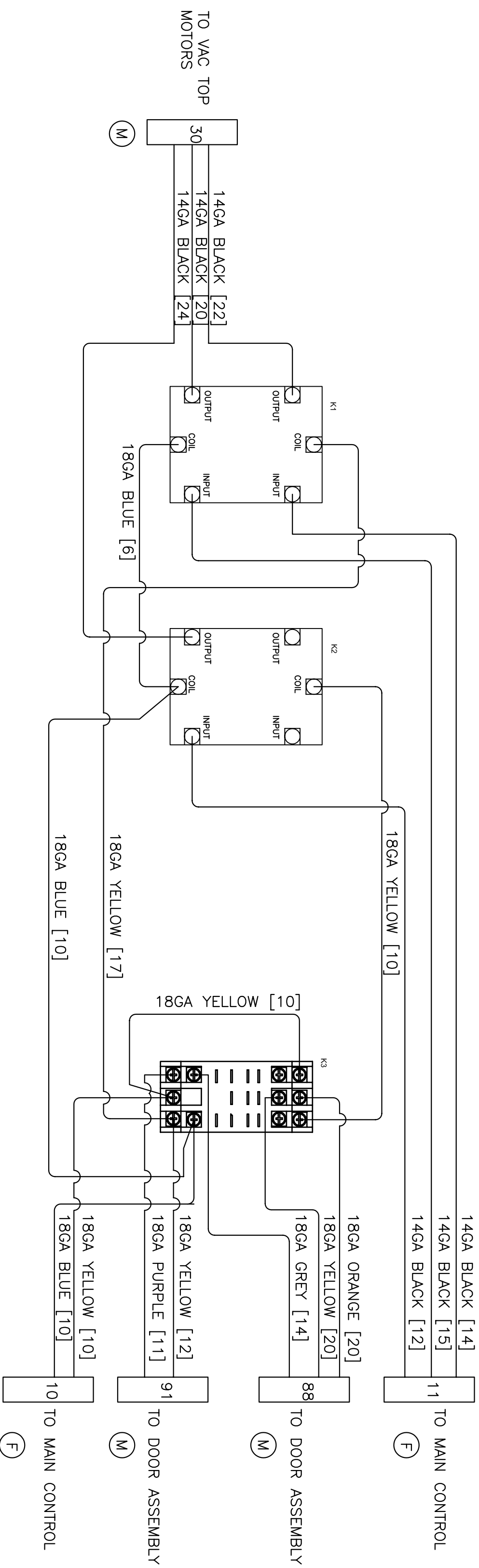
RELAY CONTROL  
S29025-4 OF 5

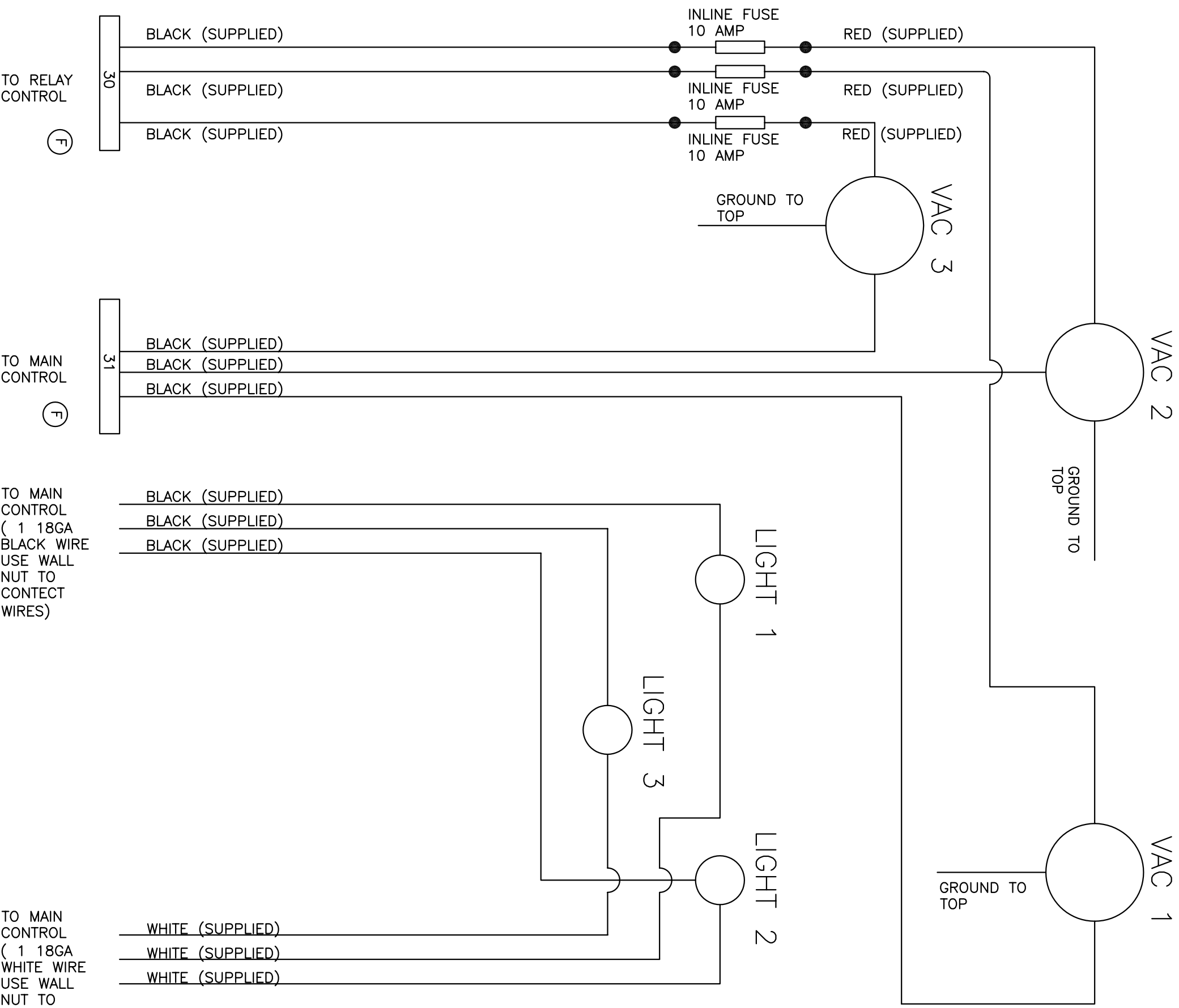
(M) MALE CONNECTOR



RELAY CONTROL  
S29025-3 OF 5

- (F) FEMALE CONNECTOR
- (M) MALE CONNECTOR





TO MAIN CONTROL  
( 1 18GA  
BLACK WIRE  
USE WALL  
NUT TO  
CONTECT  
WIRES)

TO MAIN CONTROL  
( 1 18GA  
WHITE WIRE  
USE WALL  
NUT TO  
CONTECT  
WIRES)

VAC TOP  
S29025-5 OF 5  
 (F) MALE CONNECTOR  
 ● WIRE NUT